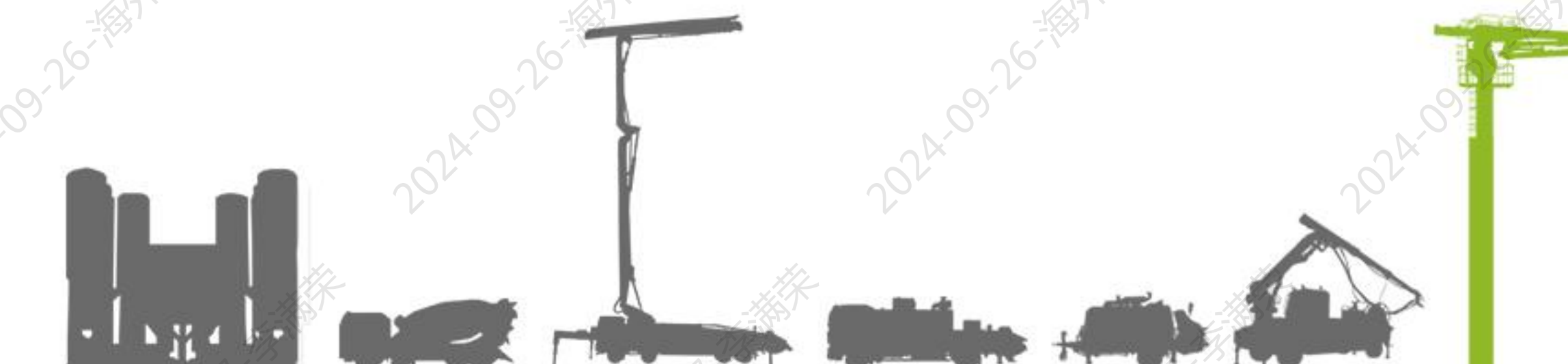


SEPARATE PLACING BOOMS

 **SOLID TO SUCCEED**



Add: No.29 Taoshan Road, Economic development zone of Jinshanqiao, Xuzhou, Jiangsu Province, China
Tel: +86-516-83111590
E-mail: xsg@xcmg.com
Right to make amendments reserved | by XCMG SCHWING | All rights reserved



MANUFACTURED BY XCMG SCHWING

CONFIGURATION FEATURES & PRODUCT PEDIGREE



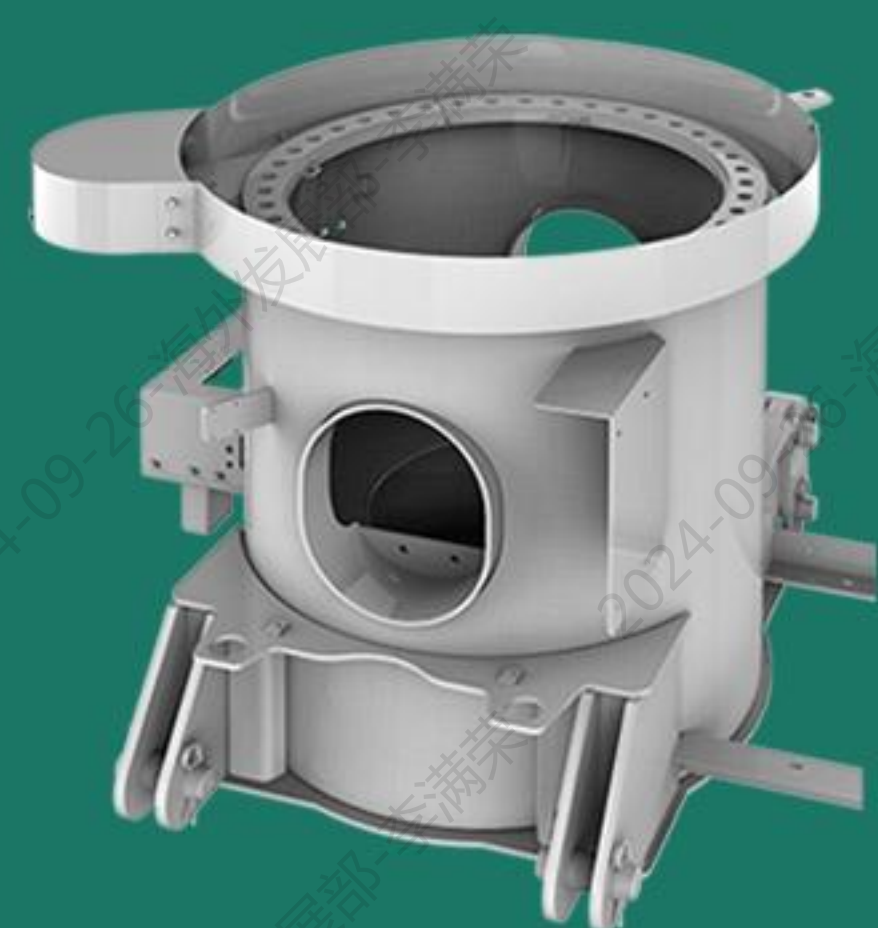
Modular

- Hexagonal mast section, good stability and strong bending resistance;
- Guided assembly, quick assembly.



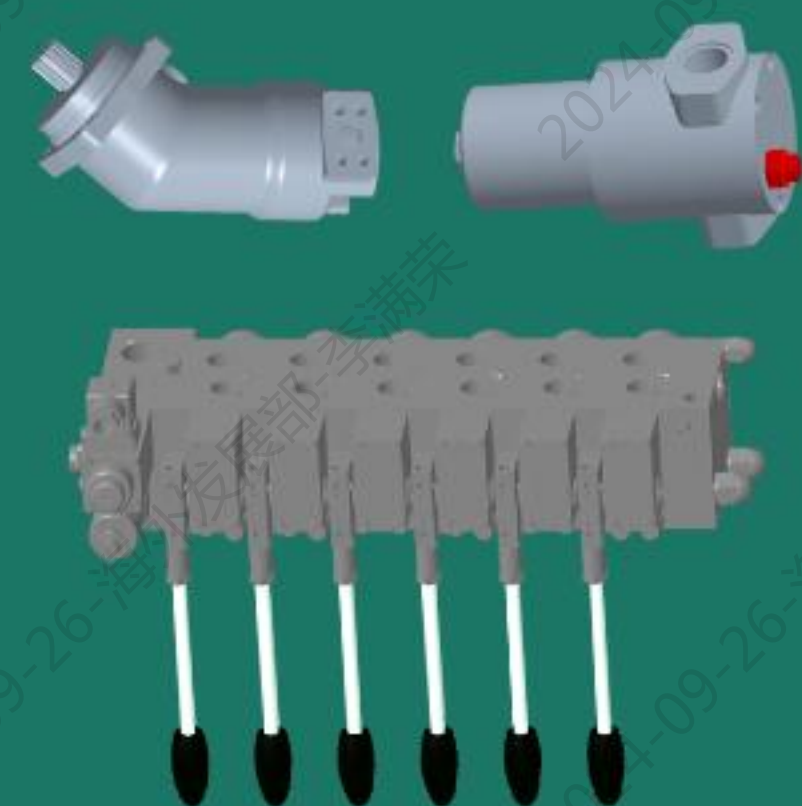
Boom

- Large cross-section high stiffness boom, external connecting rod, through-shaft connection;
- Small shaking, stable operation;
- Two-stage design, guided assembly.



Base

- High-strength steel composite box-type cylindrical structure, structurally reliable;
- Rotating support bolts are symmetrically distributed on both the inner and outer sides of the cylinder, ensuring balanced force and structural stability;
- Pin connection of modular section, quick-disconnect and easy for maintenance.



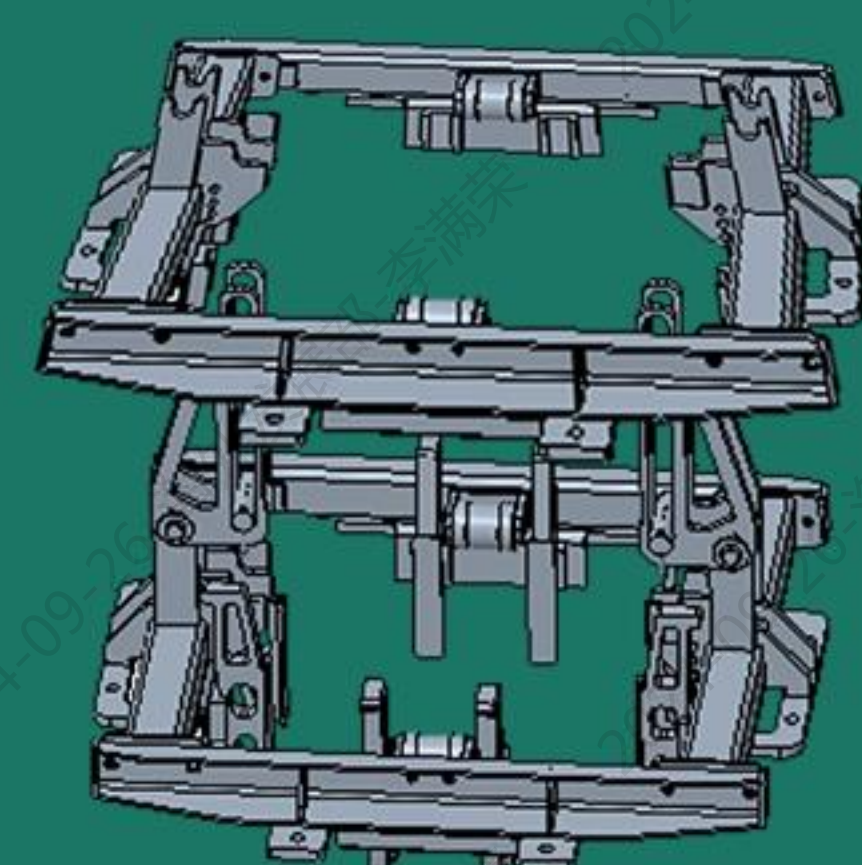
Hydraulic system

- Full-process filtration technology, high system cleanliness, and reliability;
- Load-sensitive technology, paired with secondary pressure limiting function, ensures low energy consumption and high efficiency of the system;
- High precision of the proportional multi-way valve



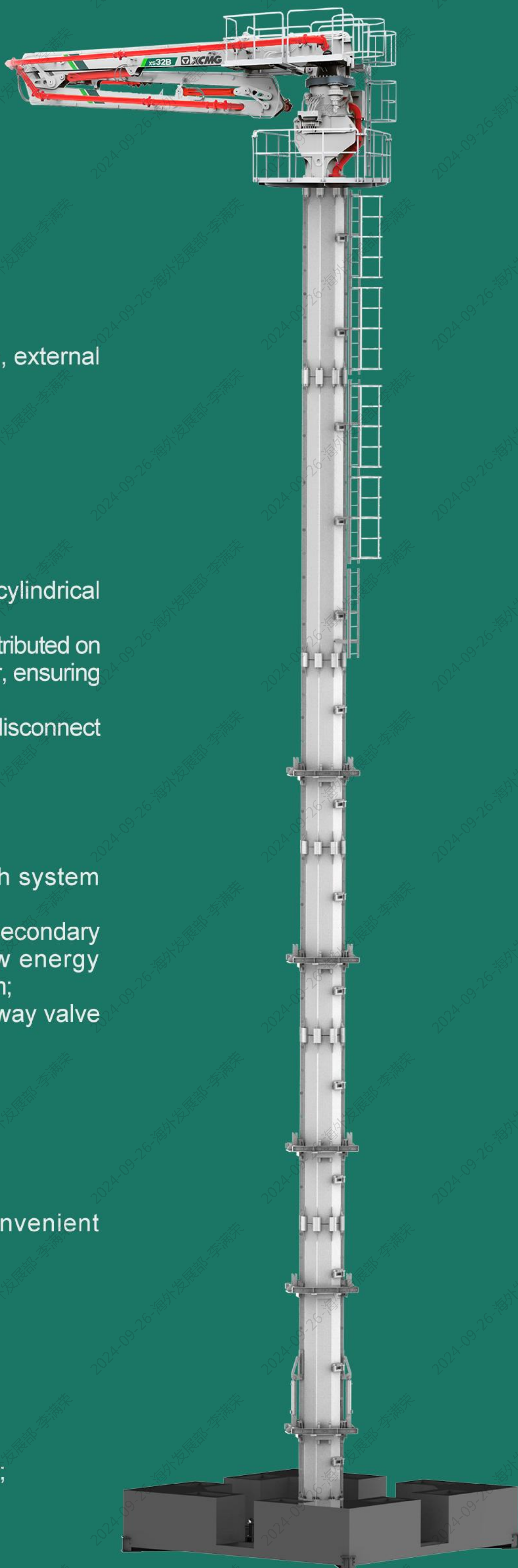
Control

- Enclosed electrical box is safe and reliable;
- Wireless remote control provides convenient operation;



Self-climbing

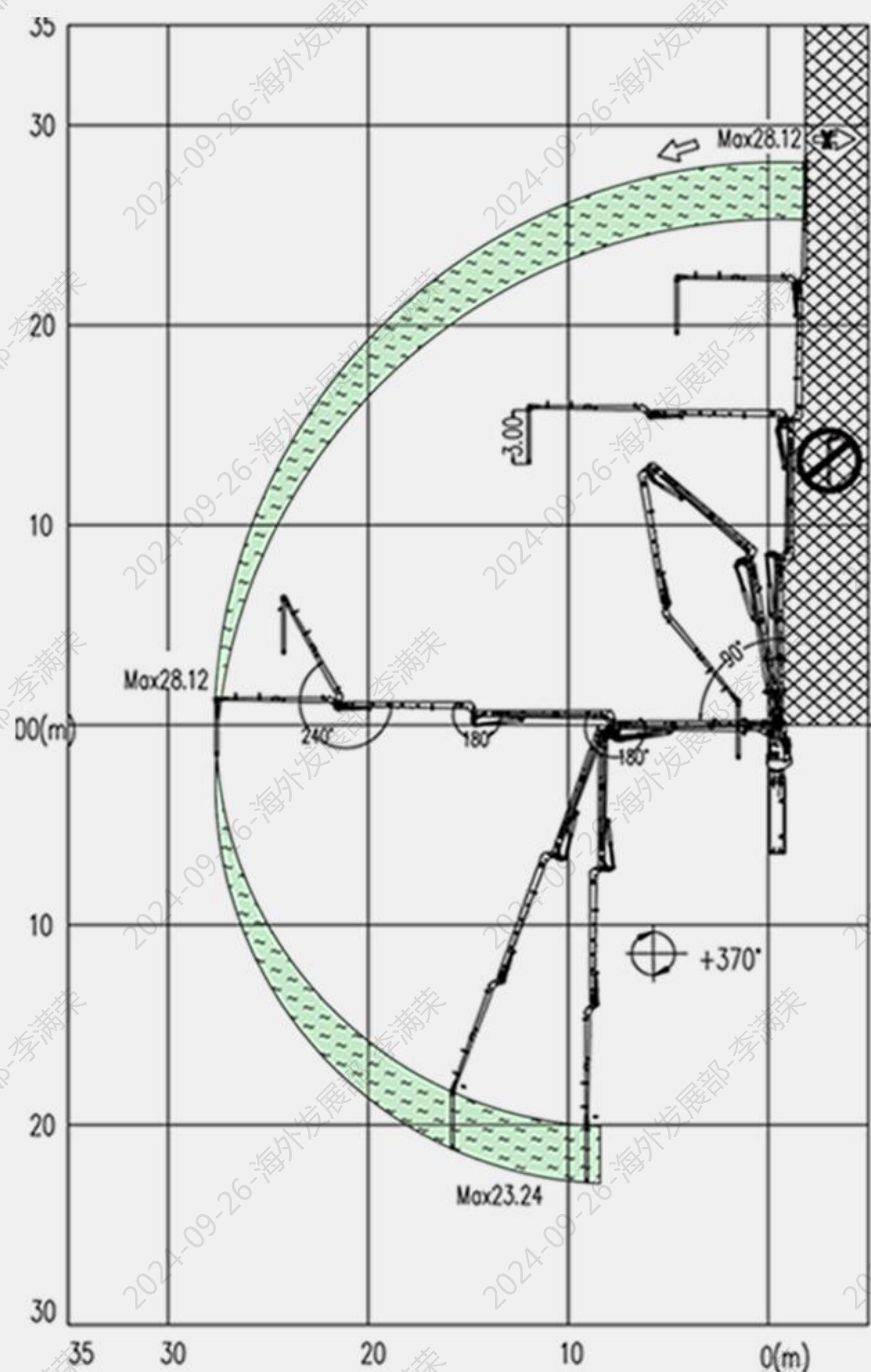
- Mature hydraulic cylinder jacking technology;
- Quick operation, easy maintenance;
- Stable, reliable, and safe self-climbing.



XS28B



Horizontal reach	m	28.12
Reach depth	m	23.24
Number of sections		4
Slewing range	°	370
Pipeline diameter	mm	125
End hose	m	3
Maximum independent height	m	24
Boom weight	kg	2732
Base weight	kg	4012



XS32B



Horizontal reach	m	31.42
Reach depth	m	25.57
Number of sections		4
Slewing range	°	370
Pipeline diameter	mm	125
End hose	m	3
Maximum independent height	m	24
Boom weight	kg	3001
Base weight	kg	4037

